

Vancouver 2010 network architecture overview

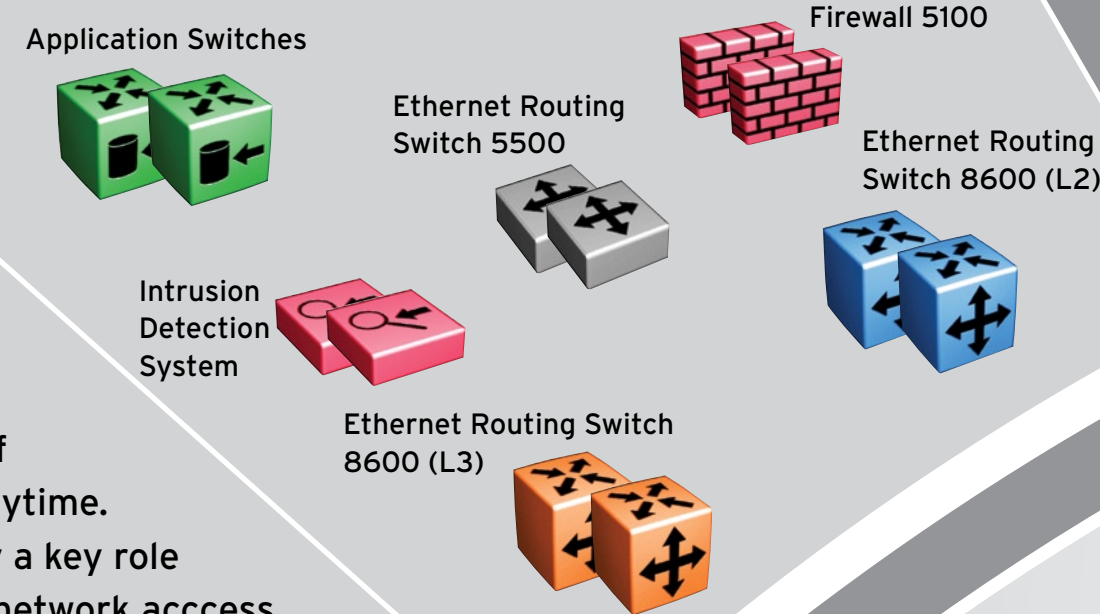


NORTEL

Designed and delivered by the Vancouver Organizing Committee; Bell, the Official Telecommunications Supplier for the 2010 Games; and Nortel, the Official Converged Network Supplier for the 2010 Games.

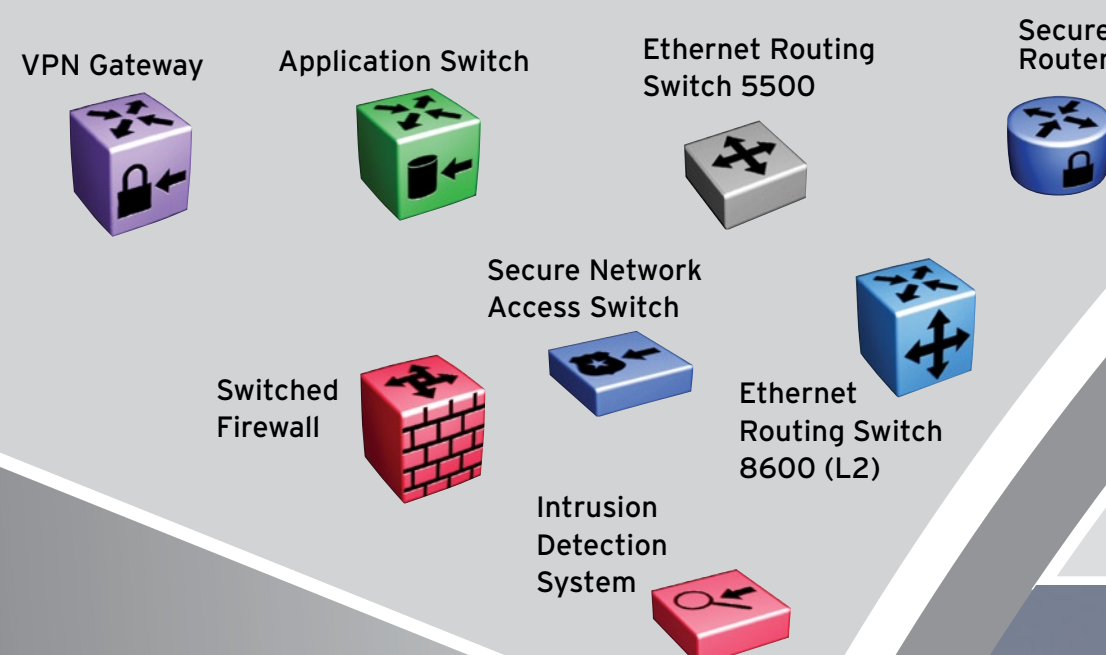
Games Data Centres

The data centres are the heart of the 2010 Games network. Nortel's Ethernet Routing Switches, Switched Firewalls and Application Switches will ensure that such critical applications as competition scoring – which must be sent from the data centres to the IBC within a third of a second – are always available.



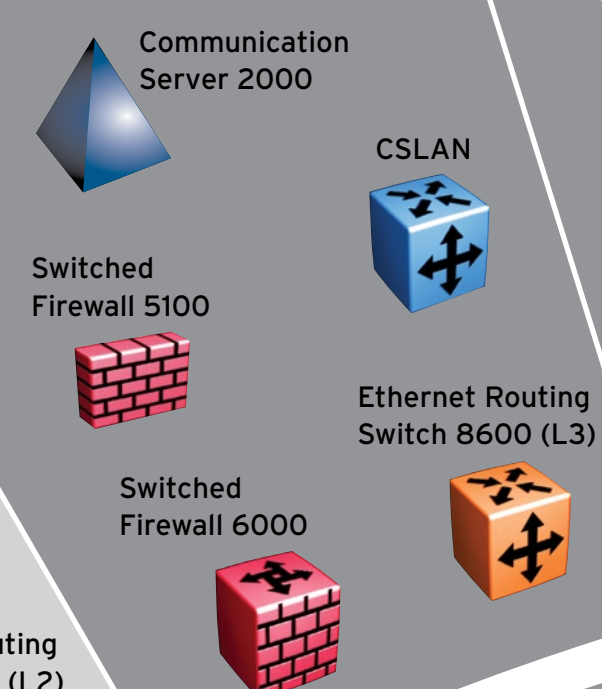
VANOC Administrative Data Enterprise

Nortel's Ethernet Routing Switches, Secure Routers, Application Switches and VPN/Security products will provide VANOC staff with secure access to applications anywhere, anytime. Nortel's Secure Network Access Switch will play a key role ensuring media, staff, athletes etc. are granted network access based on their device credentials.



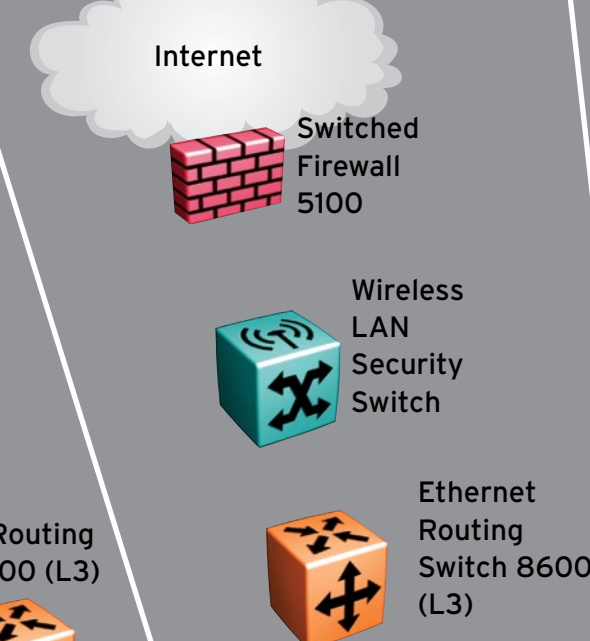
Bell Hosted VoIP Service

Bell will offer Carrier Class VoIP services using the Nortel Communication Server 2000 Compact and Nortel IP phones – the first ever Olympic Games deployment of VoIP technology.



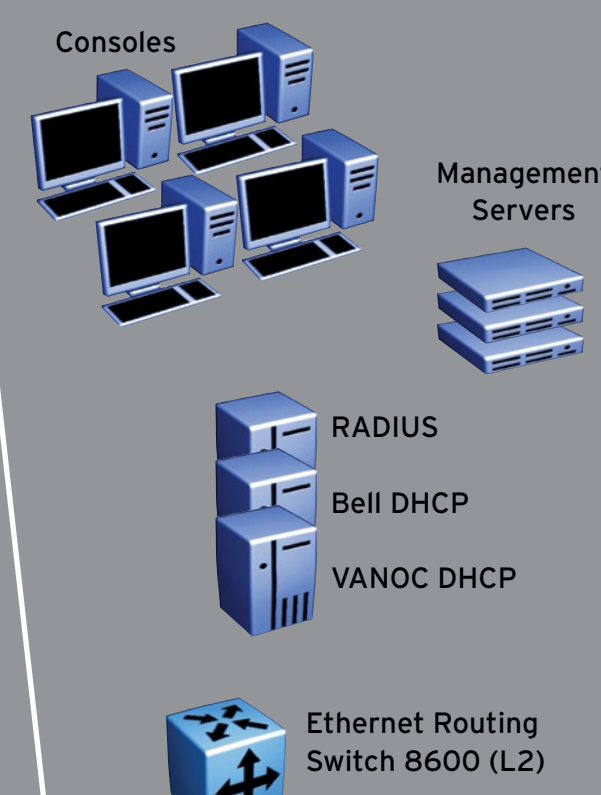
Bell Internet Access/ WiFi Hot Spot Service

Bell will be delivering wired and wireless Internet Access to the media and to the Olympic family with Nortel's LAN portfolio.



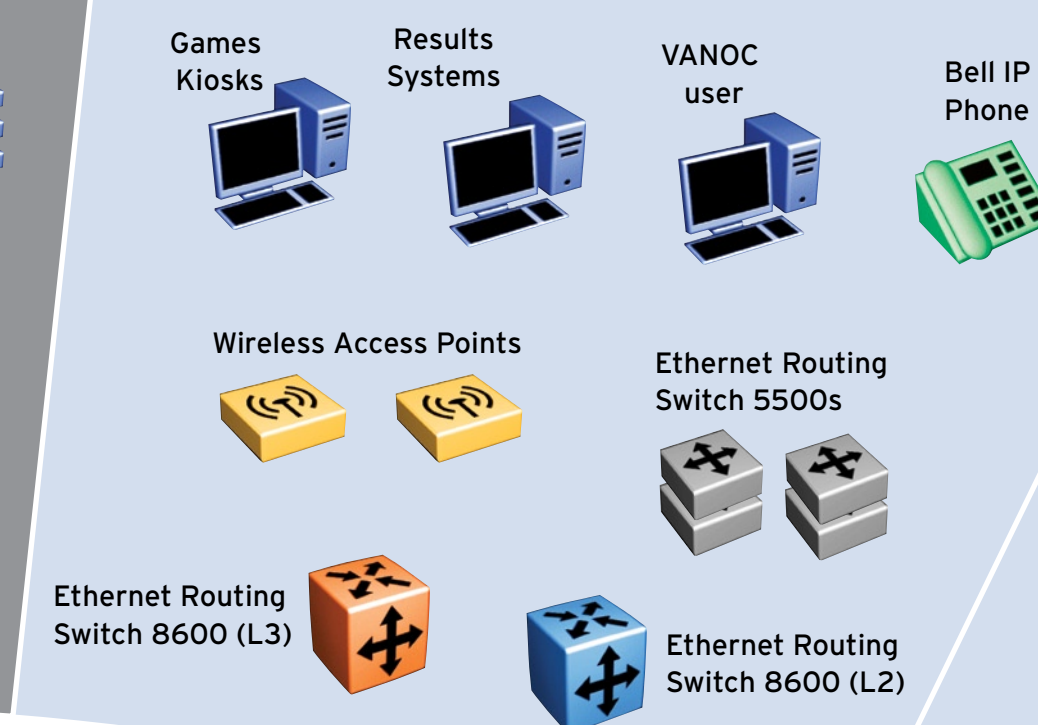
Technical Operations Centre

The Technical NOC will be used to manage, monitor and troubleshoot the entire 2010 Games network.



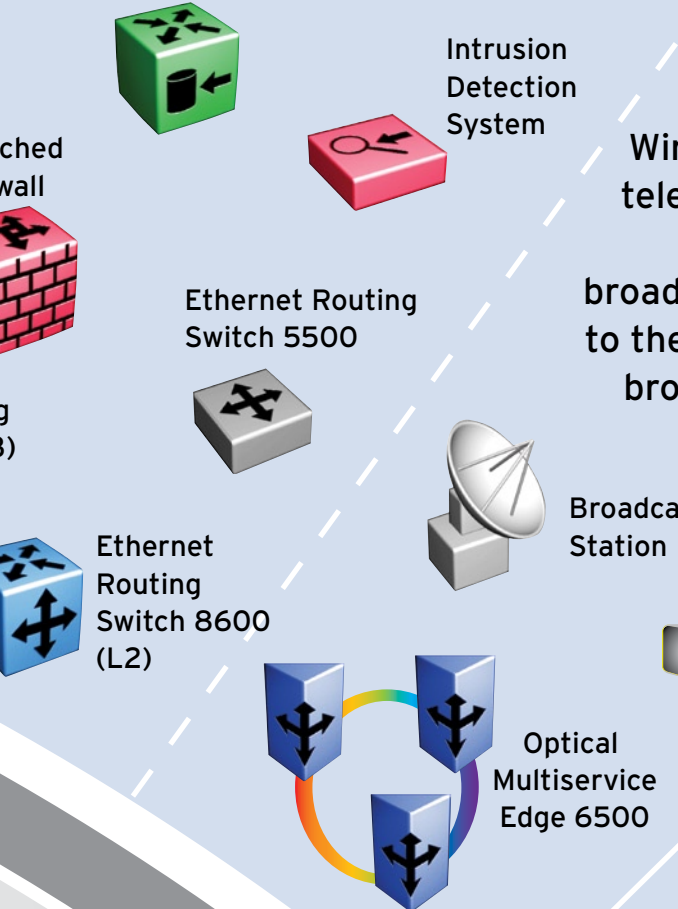
Competition Venues

Redundant 10-Gig connections will be deployed to ensure that high bandwidth network access will be extended to media, staff and athletes and officials in each major venue. Hundreds of Ethernet Routing Switches will provide converged communications.



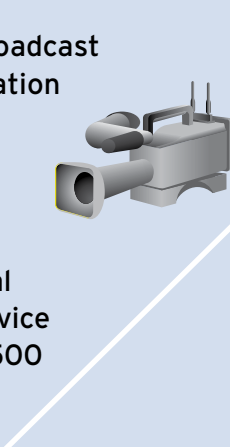
Main Media Centre

Nortel Ethernet Routing Switches, Application Switches and security products will provide reliable network access to some 10,000 writers, photographers and broadcast media.



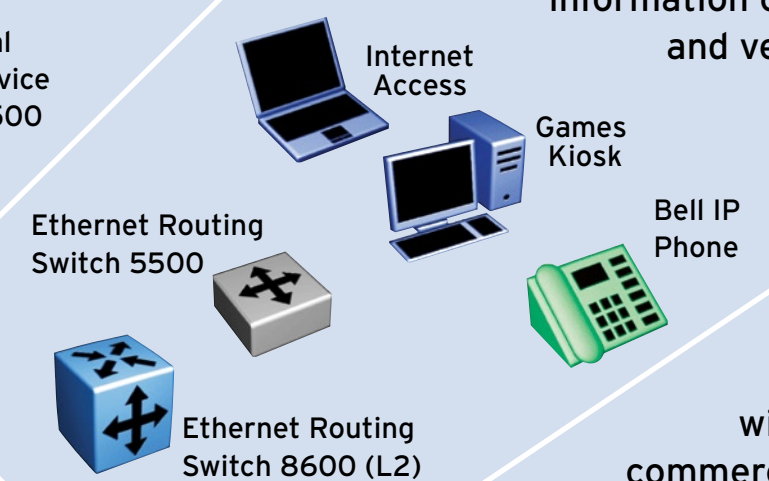
International Broadcast Centre

The IBC will bring the 2010 Winter Games to some three billion television viewers across the globe. Nortel OME 6500s will carry broadcast traffic from each venue to the IBC, where it will then be broadcast to each country via satellite.



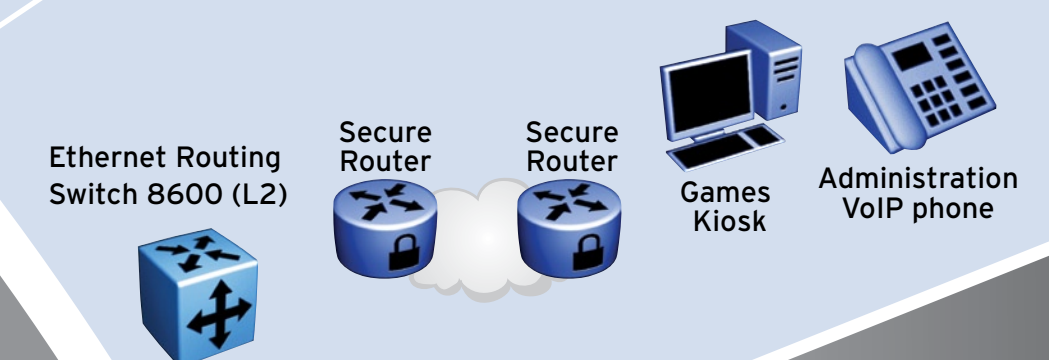
Athlete Villages

The nearly 7,000 athletes lodging in the Athlete Villages can stay connected to home with Internet access and IP telephony provided by Bell, while Games kiosks throughout the village will provide up-to-the-minute information on events, standings and venue logistics.



Supporting Venues

Nortel Secure Routers will extend Ethernet over Bell's commercial T1/T3 network, providing cost-effective communications to smaller venues such as practice facilities.



Optical Ethernet Core
Vancouver to Whistler, Common Photonic Core

